

FX125 MEDIUM SERIES HYDRAULIC BREAKERS – SUPERIOR STRENGTH AND DURABILITY

The Fx125 breaker has a 10- to 15-ton carrier range with two unique configurations, making this mid-sized hammer the perfect choice for backhoes and mini-excavators.

Designed to handle larger, more demanding tasks, the Fx125 is perfectly suited for use on roads, bridges, rock, utility applications. It can also be mounted on pedestal systems for breaking oversize material in quarries.

Like the other hammers in the Fx family, the Fx125 offers improved durability, with features that include a square, mono-block body for superior strength and a replaceable cylinder liner for reduced maintenance. Plus, the elimination of thru-bolts has proven to significantly lower downtime and failure.

Features & Benefits

Fx125 Features and Benefits

- Eliminates Thru-Bolts
- Increased hydraulic flow range for use on a wide carrier range
- Mono-block design eliminates a separate cylinder, front-head and thru-bolts
- Improved dust intake prevention system increases reliability
- Replaceable cylinder liner with concentric porting keeps piston aligned for maximum impact performance
- Improved valve design reduces hydraulic fluid temperatures, increasing performance
- Square body design for superior strength
- 3-point sealing system prevents internal contamination
- Redesigned piston increases surface contact to working steel
- TLB configuration suits rubber-tired backhoe applications
- Qtv cradle for improved protection, sound suppression and dampening
- Improved dampening system within the cradle keeps the breaker properly secure to reduce wear
- Increased and improved lubrication on critical components
- Longer thrust bushing for increased internal alignment insures direct impact with piston
- Includes two-year warranty with registration



Fx125 TLB and Fx125 Qtv Hydraulic Breakers



Fx125 TLB

Fx125



Impact energy class

2,000 ft. lbs.

WEIGHT & DIMENSIONS*

*Total Weight in lbs (kg)	1,348 (611.4)	1,820 (825.5)
*Total Length in Inches (mm)	77 (1,956)	94.25 (2,394)

WORKING STEEL

Diameter in Inches (mm)	4.33 (110)
New Length of Steel Measured from Front Face in Inches (mm)	27.75 (680)
Replaceable Steel Length, Measured from Front Face in Inches (mm)	15.94 (405)

GENERAL SPECIFICATIONS

Adjustable Blows Per Minute (BPM)	400 ~ 650	
Acceptable GPM Range (LPM)	18.5 ~ 31.5	
Acceptable PSI Range (Bar)	2,320 ~ 2,610 (160 ~ 180)	
85 dB(A) Qt version @	NA	39 ft (12m)
Recommended Carrier Range in U.S. Tons (tonnes)	10 ~ 15 (9 ~ 13.5)	
Carrier Options		

The contents of these specifications are subject to change without notice.



*NOTE: Total weight and total length include standard working steel and universal top cap (with a Qtv configuration), less mounting pins and bushings.

Configurations

MODEL

CONFIGURATIONS

Fx125



CP	Breaker assembled in full length, 1-piece CP072 bracket & includes; (2) hose whips and (1) standard working steel (moil or chisel or blunt)
CP-QA	Breaker assembled in full length, 1-piece CP072 bracket & includes; (1) Quick-Attach brkt, (2) hose whips, and (1) st'd working st'l (moil or chisel or blunt)
ME	Breaker assembled in full length side plates expressly for mini-exc. & includes; (2) hose whips, all mtg and (1) st'd working st'l (moil or chisel or blunt)
FSP	Breaker assembled in full length, flanged side plates & includes; a top cap, all mounting, (2) hose whips and (1) st'd working st'l (moil or chisel or blunt)
WB	Breaker assembled in full length side plates expressly for Weldco-Beals coupler & includes; (2) hose whips and (1) st'd working st'l (moil or chisel or blunt)
SS	Breaker assembled in a 1-piece, HD skid-steer quick-attach bracket & includes; (2) hose whips and (1) standard working st'l (moil or chisel or blunt)
QT/Qtv	Breaker assembled in a full length and protective, low noise case & includes: top cap, mounting, hose whips & (1) st'd working st'l

Fx Series Cut-Away

Fx Medium Series Cut-Away

- New valve design reduces hydraulic fluid temperatures to increase performance
- Redesigned piston increases surface contact to working steel
- Advanced lubrication system evenly distributes grease to thrust bushing, front bushing and rod pins
- Higher backhead pressure for improved performance
- Square body, mono-block design for superior strength, eliminates a separate cylinder, fronthead and through-bolts
- Replaceable cylinder liner with concentric cylinder porting keeps piston aligned for maximum impact performance
- 3-point Patent Pending dust intake prevention system incorporates grooves to trap contaminants on the upstroke and expel them on the piston down stroke, cushion ring acts as a secondary trap, improved external sealing minimizes dust intake
- Increased bushing surface keeps working steel aligned for greater impact and is replaceable without disassembly

Select to expand cut-away.



Carrier Compatibility

[Carrier Compatibility >](#)

Literature and Links



[DEALERLINK](#)



[Parts & Manuals](#)



[Fx125 Literature](#)



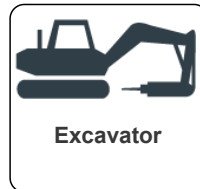
[Breaker/Attachment Division Flip Book](#)



[Breaker Attachment Division Sales](#)

CARRIER COMPATIBILITY GUIDE for Fx125

Select Carrier Type



All product and company names are trademarks™ or registered® trademarks of their respective holders. Use of them does not imply any affiliation with or endorsement by them.

